



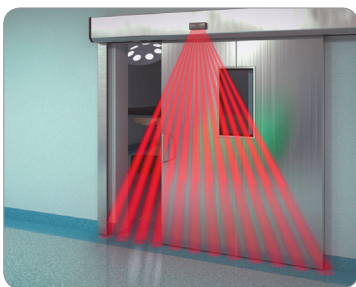
3H-IR14C

Activation + Safety



EN16005 compliant Sliding Door Activation/Safety in a compact sensor housing

Infrared Technology, Dual Relay Outputs

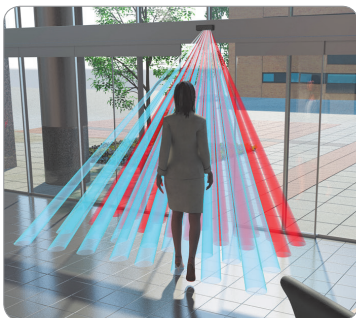


COMPACT

Smallest sensor on the market that offers EN16005 compliant automatic door activation combined with pedestrian safety

PEDESTRIAN SAFETY

Dense and reliable curtain of safety beams focused directly in front of the moving door with a factory set presence timer setting of 30s



IDEAL FOR INTERNAL MOUNTING

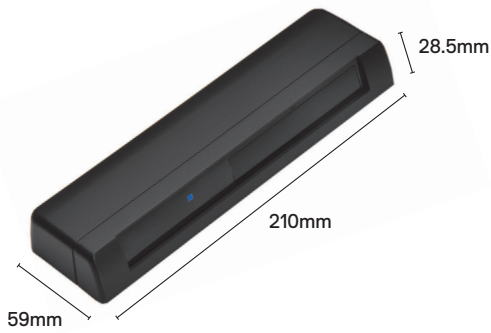
Only 37mm of headroom required for internal mounting in a door engine cover or dropped ceiling when mounted in conjunction with our HA-14 internal mounting bracket

INSTALLS IN MINUTES

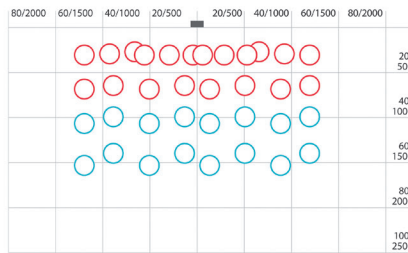
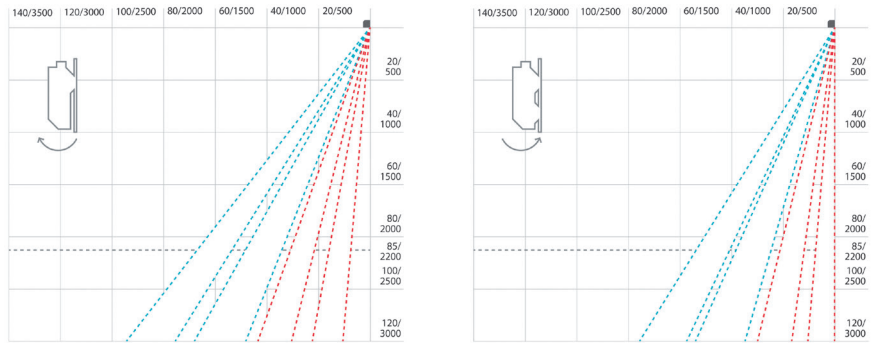
Set the safety zone in front of the sliding door and change only two dip switch settings for full compliance to European automatic door norms EN16005

3H-IR14C

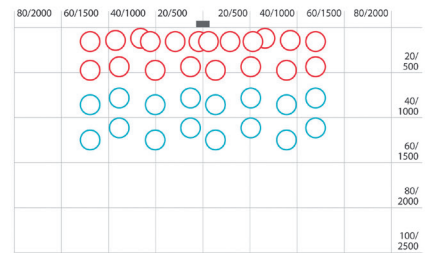
Activation + Safety



Detection Area (inches / millimetres)



Installation height: 85"/2200mm



Installation height: 85"/2200mm

Technical Specifications

Model	3H-IR14C Activation + Safety	
Detection Method	Active Infrared Reflection	
Category	Category 2, Performance Level D according to EN ISO 13849-1: 2008	
Installation Height	3.0m (9.84ft) Max	
Presence Timer	Rows 1-2 = 30s fixed, Rows 3-4 = 2s fixed	
LED Indicator	Green: Standby Blue: Rows 3 & 4 detecting Red: Rows 1 & 2 detecting	
Power Supply	AC/DC 12 to 24V ±10%	
Power Consumption	AC12V : 1.1VA Max, AC24V : 1.3VA Max DC12V : 70mA Max, DC24V : 40mA Max	
Output	Safety (R1, R2)	Form A Relay Contact DC50[V] 0.1[A] (Resistance load)
Output	Activation (R2, R3, R4)	Form A Relay Contact DC50[V] 0.1[A] (Resistance load)
Test Input	DC24V : 6 [mA] Max	
Output Holding Time	Approx. 0.5 sec	
Operating Temperature	-20°C to +60°C, (-4°F to 140°F)	
IP Rating	54	
Weight	Approx. 0.18kg (0.40 lbs)	
Available Colours	S: Silver, BL: Black	

Associated Accessories

Under Mount Bracket
UTB



Black Weather Cover
WC_IR/BL



Internal Mounting Bracket
HA-14



Spot Finder
BF-1

