

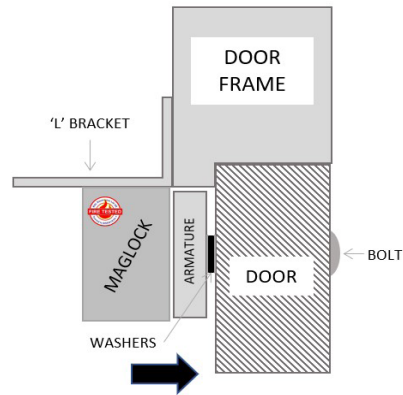


# BRACKET FOR SLIMLINE MAGNET (600LB)

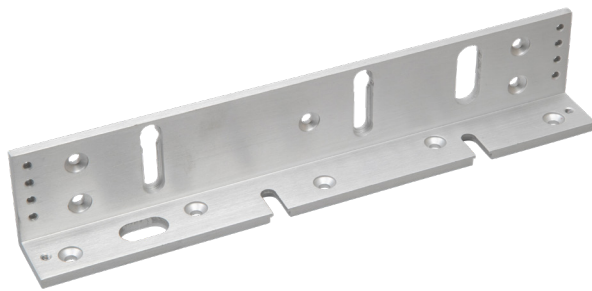
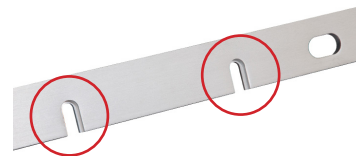
**MAGNETIC LOCK**

Fire tested range of maglocks and brackets from a market leader in access control.

**FIRE TESTED** to  
BSEN1634-1:2014 & BS476:Part22:1987  
(30, 60, 90 & 120 min timber door-sets)



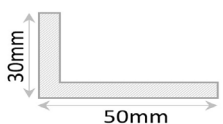
Improved safety fixings for hassle free installs



**BK600L**

SPECIFICATION	FEATURES	OTHER PRODUCTS
---------------	----------	----------------

**BK600L**  
 • Adjustable L bracket  
 • For use with the ML600 range of products  
 Product now has added slots to improve and simplify the installation process, whilst enhancing the safety features of the product.  
 • Has 4 points of secure fixing  
 • Magnet can now be slid into bracket to free up both hands to secure lock and bracket



**BK600L**  
 • L bracket  
 Alternative Brackets/Housings:  
 • BK600-F-L/AB (Architectural F/ZL)  
 • AB600ZL-DC (Architectural ZL)  
 • GD600ZL (Glass Door ZL)  
 • AB600CL (Architectural L)  
 • ADJ600-L (Highly adjustable L)  
 • AH600 (Required for Fire Doors)  
 • BK600U (Glass door bracket)

INWARD  
OUTWARD



**DIMENSIONS**

**BK600L**  
 • L bracket: 250L mm  
 • 225g (Unboxed)

**CONTENTS**

**BK600L**  
 • 1 x L Adjustable bracket

