

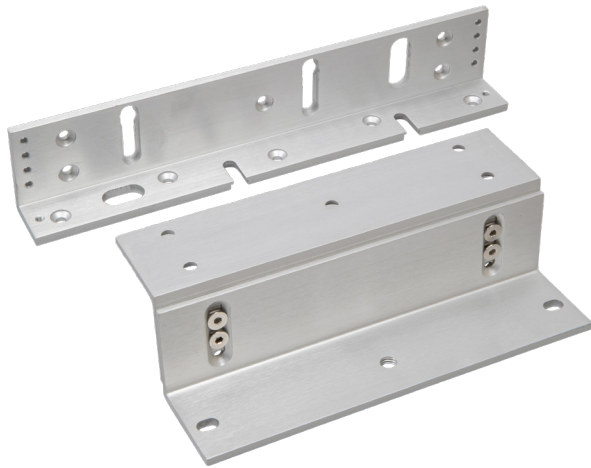


BRACKETS FOR SLIMLINE MAGNET (600LB)

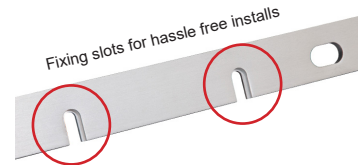
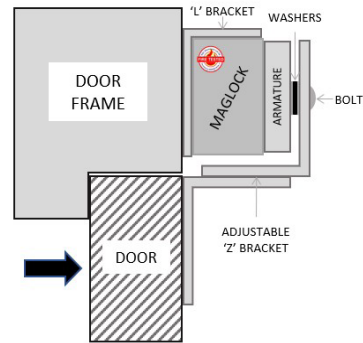
MAGNETIC LOCK

Fire tested range of maglocks and brackets from a market leader in access control.

FIRE TESTED to
BSEN1634-1-2014 & BS476:Part22:1987
(30, 60, 90 & 120 min timber door-sets)



BK600ZL



SPECIFICATION

BK600ZL

- Adjustable Z&L brackets
- For use with the ML600 range of products
- Can be fitted with BK600U for glass doors

Product now has added slots to improve and simplify the installation process, whilst enhancing the safety features of the product.

- Has 4 points of secure fixing
- Magnet can now be slid into bracket to free up both hands to secure lock and bracket

Z bracket can extend by an additional 20mm to allow for door variations.

DIMENSIONS

BK600ZL

- Z bracket: 180L mm
- L bracket: 250L mm
- 644g (Boxed)
- 556g (Unboxed)

FEATURES

BK600ZL

- ZL bracket

Alternative Brackets/Housings:

- BK600-F-L/AB (Architectural F/ZL)
- AB600ZL-DC (Architectural ZL)
- GD600ZL (Glass Door ZL)
- AB600CL (Architectural L)
- ADJ600-L (Highly adjustable L)
- AH600 (Required for Fire Doors)
- BK600U (Glass door bracket)

INWARD

OUTWARD

OTHER PRODUCTS

IEPS/PTE



EXTR02



ML600



DU-CB/PTE



Manufactured by a BSIA Member