



DOOR RETAINER

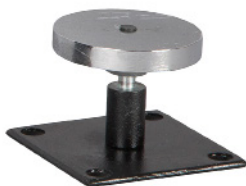
DOOR RETAINERS

Fire tested range of door retainers and maglocks and brackets from a market leader in access control.

FIRE TESTED to
BSEN1634-1:2014 & BS476:Part22:1987
(30, 60, 90 & 120 min timber door-sets)



DR-01/BK



DR-01/W



DR-01/SS

SPECIFICATION

- DR-01
- Holding force: 250N
 - Voltage: 24VDC
 - Current draw: 70mA
 - 2mm stainless steel face plate
 - Extra high impact/strength ABS enclosure
 - Successfully fire tested to BSEN1634-1
 - 30, 60, 90, 120 minute fire doors
 - Not suitable for 240V

FEATURES

- DR-01
- Manual release push button
 - Anti residual magnetism device
 - Wall mount (as standard)
 - Floor mounting bracket available as an add-on (DR-01-BKT)
 - Available in:
 - Black (DR-01/BK)
 - White (DR-01/W)
 - Stainless steel (DR-01/SS)

Optional Extras:

- DR-01/BKT (Floor Mounting Bracket)
- DR-ARM-1 (Armature on Chain)
- 2402/4TRS (2amp, 4 outputs)
- 2404/8TRS (4amp, 8 outputs)

OTHER PRODUCTS

2402/4TRS



DR-01-BKT



DIMENSIONS

- DR-01
- 90x90x40/50 (mm) (LxWxD)
 - 840g (Boxed) • 484g (Unboxed)
- DR-01/SS
- 90x90x40/50 (mm) (LxWxD)
 - 1.1kg (Boxed) • 662g (Unboxed)

CONTENTS

- Door Retainer
- Door hold open magnet (250N)
 - Armature plate
 - Fixing kit

DR-ARM-1



DU-SS/PTE



Manufactured by a BSIA Member